



# S-CUBE KAT

**Cassoni centrifughi pale rovesce  
per aria ad alta temperatura  
per cucine industriali (180°C)**

**Backward curve centrifugal box fans  
for high temperature air of industrial kitchens (180°C)**



La serie non rientra nel campo di applicazione della Direttiva ErP 2009/125/CE e successivi regolamenti

The series is not affected by ErP Directive 2009/125/CE and further Regulations

## DESCRIZIONE

I cassoni a pale rovesce insonorizzati S-CUBE KAT sono stati concepiti per l'aspirazione su cappe da cucina impiegate nel campo della ristorazione e in impianti industriali. La caratteristica peculiare di questo cassonetto consiste nell'aver il motore separato dal flusso per mezzo di un setto in lamiera zincata che mantiene separato il flusso d'aria movimentato rispetto all'aria di raffreddamento, permettendo così un **funzionamento continuo da +100°C fino alla T° max di 180°C** e preservando il motore dalle tipiche sostanze di natura grassa e residui di combustione prodotti dai fornelli delle cucine riducendo così al minimo necessario le operazioni di pulizia e manutenzione.

## COSTRUZIONE

- Telaio realizzato con profili di alluminio e pannelli smontabili a doppio strato imbottiti con materiale fonoassorbente.
- Esecuzione 5 (accoppiamento diretto con girante a sbalzo su motore flangiato B5).
- Isolamento acustico interno ai pannelli in materiale autoestinguente.
- Girante in acciaio zincato bilanciata dinamicamente secondo ISO 1940.
- Piedi di fissaggio con fori predisposti per il sollevamento e una facile installazione.

## MOTORE

Motori asincroni trifase o monofase a norme internazionali IEC 60034, IEC 60072, EMC 2014/30/UE, LVD 2014/35/UE, marcato CE, IP55, classe F. Tutti idonei ad un servizio S1 (funzionamento continuo a carico costante).

## ACCESSORI

- Tettuccio parapiovvia
- Supporti antivibranti
- Piedi di supporto a pavimento
- Raccordo aspirante Quadro-Tondo
- Raccordo premente Quadro-Tondo
- Giunto antivibrante (da modello 35, in abbinamento a raccordo aspirante circolare o raccordo quadro/tondo)
- Interruttore di servizio IP67
- Vaschetta raccogli grasso
- Pannello inferiore con scarico.

## DESCRIPTION

S-CUBE KAT box fans are designed for ducted or direct industrial kitchen ventilation. Designed for an easy installation, S-CUBE KAT motor is separated from the stream by a steel sheet panel which avoids the heating and the direct contact of the motor with dirty particles (grease and combustion residuals coming from the stoves), reducing the need of maintenance and cleaning operations. Double skin acoustically insulated panels reduce the noise level for a better comfort also in case of indoor installations. Suitable to convey clean and dusty air in a **range of temperature from +100°C up to +180°C**.

## CONSTRUCTION

- Aluminium frame with double skin sound absorbing insulated panels removable from the impeller side.
- Motor external to the stream, B5 execution directly coupled to the impeller.
- Sound absorbing and self-extinguishing material between the steel sheet layers of the panels.
- Galvanized steel sheet backward curved impeller dynamically balanced according to ISO1940.
- Punched mounting feet for an easy handling and fixing.

## MOTOR

Asynchronous squirrel cage three-phase or single-phase motors according to international standards IEC 60034, IEC 60072, EMC 2014/30/UE, LVD 2014/35/UE, CE marked, IP 55, Class F. Suitable to S1 service (continuous running with constant load).

## ACCESSORIES

- Water-proof protection cover
- Anti-vibration supports
- Floor support feet
- Square to round spigot inlet cone
- Square to round outlet adaptor
- Flexible connector (on demand from model 35, yo be coupled with round spigot inlet cone or square to round outlet adaptor)
- Service switch IP67
- Grease collector tray
- Lower panel with drain.

# PRESTAZIONI | PERFORMANCE

# S-CUBE KAT

Le prestazioni aerauliche sono rilevate in conformità alla norma EN ISO 5801/AMCA 210 con densità dell'aria standard avente peso specifico 1,2 Kg/m<sup>3</sup>. Alimentazione 230V/1Ph/50Hz o 400V/3Ph/50Hz. Air performances measured according to EN ISO 5801 / AMCA 210 standard with air density with 1,2 Kg/m<sup>3</sup> specific weight. Power supply 230V/1Ph/50Hz or 400V/3Ph/50Hz.

**Lp** Livello di pressione sonora rilevato in condizioni di campo libero, propagazione emisferica, categoria di misura C a norma EN ISO 13349, nel punto di massimo rendimento, alla distanza di 3 metri dal lato aspirazione e si presenta solo per fini comparativi. Sound pressure level measured in free field conditions, propagation hemispherical, measurement category C in accordance with EN ISO 13349, at the point of maximum efficiency, at a distance of 3 meters, inlet side (for comparative purposes only).

**Lw** Livello di potenza sonora ottenuto secondo norma ISO 3746. Tolleranza +/- 3 dB(A). Sound power level obtained in accordance with EN ISO 3746. Tolerance +/- 3 dB(A).

## S-CUBE KAT 25

| Code    | Tipo Type  | Modello Model | U | P | Pm (kW) | In (A) | IP/CL | IE3 | Mot. (Gr) |
|---------|------------|---------------|---|---|---------|--------|-------|-----|-----------|
| 1SK2501 | S-CUBE KAT | 254           | M | 4 | 0,09    | 1,10   | 55/F  | -   | 56        |
| 1SK2500 |            | 254           | T | 4 | 0,09    | 0,35   | 55/F  | -   | 56        |

### LIVELLI SONORI | SOUND LEVELS dB(A)

| Hz  |    | 63   | 125  | 250  | 500  | 1000 | 2000 | 4000 | 8000 | TOT  |
|-----|----|------|------|------|------|------|------|------|------|------|
| 254 | Lw | 36,5 | 51,6 | 49,4 | 50,1 | 49,2 | 47,9 | 43,3 | 29   | 57   |
|     | Lp | 16   | 31,1 | 28,9 | 29,6 | 28,7 | 27,4 | 22,8 | 8,5  | 36,5 |

## S-CUBE KAT 31

| Code    | Tipo Type  | Modello Model | U | P | Pm (kW) | In (A) | IP/CL | IE3 | Mot. (Gr) |
|---------|------------|---------------|---|---|---------|--------|-------|-----|-----------|
| 1SK3101 | S-CUBE KAT | 314           | M | 4 | 0,12    | 1,10   | 55/F  | -   | 63        |
| 1SK3100 |            | 314           | T | 4 | 0,12    | 0,45   | 55/F  | -   | 63        |

### LIVELLI SONORI | SOUND LEVELS dB(A)

| Hz  |    | 63   | 125  | 250  | 500  | 1000 | 2000 | 4000 | 8000 | TOT  |
|-----|----|------|------|------|------|------|------|------|------|------|
| 314 | Lw | 36,5 | 47,2 | 56   | 61,5 | 62   | 57,4 | 51,7 | 41,2 | 66,2 |
|     | Lp | 16   | 26,7 | 35,5 | 41   | 41,5 | 36,8 | 31,2 | 20,6 | 45,7 |

## S-CUBE KAT 35

| Code    | Tipo Type  | Modello Model | U | P | Pm (kW) | In (A) | IP/CL | IE3 | Mot. (Gr) |
|---------|------------|---------------|---|---|---------|--------|-------|-----|-----------|
| 1SK3501 | S-CUBE KAT | 354           | M | 4 | 0,25    | 1,90   | 55/F  | -   | 71        |
| 1SK3500 |            | 354           | T | 4 | 0,25    | 0,85   | 55/F  | -   | 71        |

### LIVELLI SONORI | SOUND LEVELS dB(A)

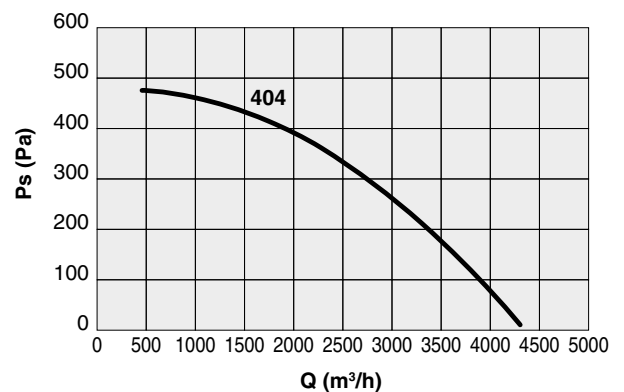
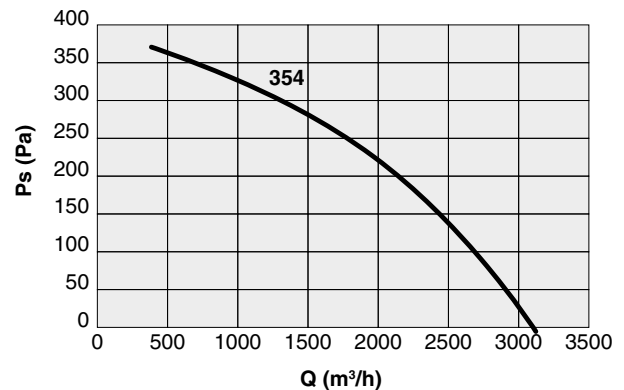
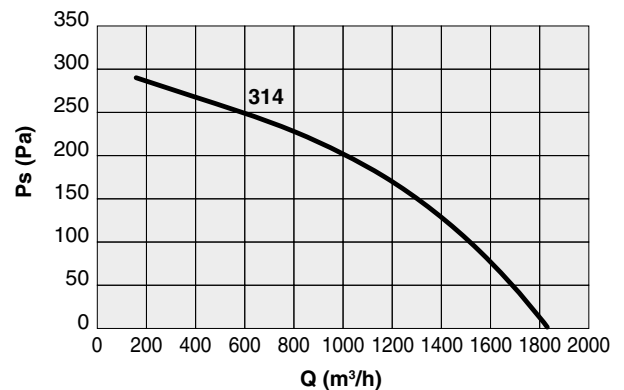
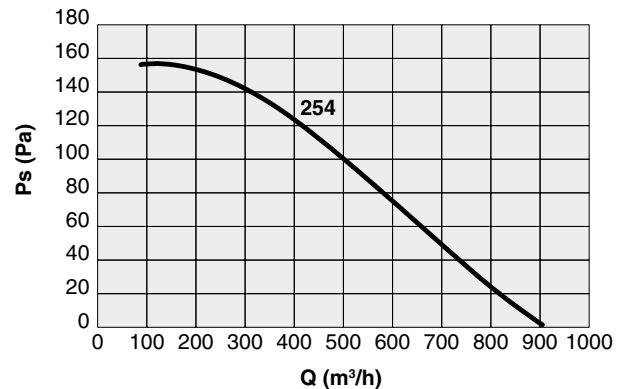
| Hz  |    | 63   | 125  | 250  | 500  | 1000 | 2000 | 4000 | 8000 | TOT  |
|-----|----|------|------|------|------|------|------|------|------|------|
| 354 | Lw | 40,2 | 53,9 | 60,1 | 64,9 | 65   | 61,5 | 56,6 | 45,9 | 69,7 |
|     | Lp | 19,7 | 33,4 | 39,5 | 44,4 | 44,4 | 41   | 36,1 | 25,4 | 49,2 |

## S-CUBE KAT 40

| Code    | Tipo Type  | Modello Model | U | P | Pm (kW) | In (A) | IP/CL | IE3 | Mot. (Gr) |
|---------|------------|---------------|---|---|---------|--------|-------|-----|-----------|
| 1SK4001 | S-CUBE KAT | 404           | M | 4 | 0,55    | 4,10   | 55/F  | -   | 80        |
| 1SK4000 |            | 404           | T | 4 | 0,55    | 1,60   | 55/F  | -   | 80        |

### LIVELLI SONORI | SOUND LEVELS dB(A)

| Hz  |    | 63   | 125  | 250  | 500  | 1000 | 2000 | 4000 | 8000 | TOT  |
|-----|----|------|------|------|------|------|------|------|------|------|
| 404 | Lw | 42,8 | 56,5 | 63,5 | 66,1 | 66,9 | 64   | 60,5 | 49,1 | 71,9 |
|     | Lp | 22,3 | 36   | 42,9 | 45,6 | 46,3 | 43,5 | 40   | 28,6 | 51,3 |



SEZ.  
1.11

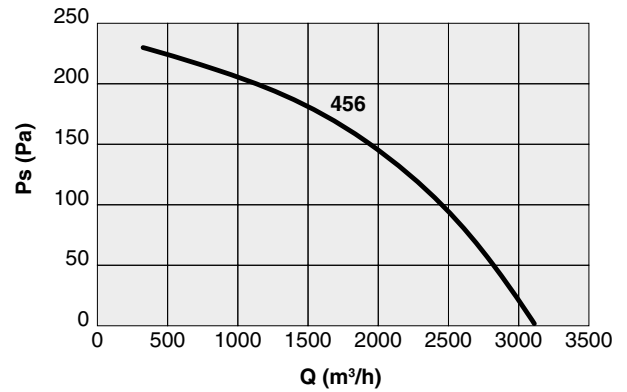
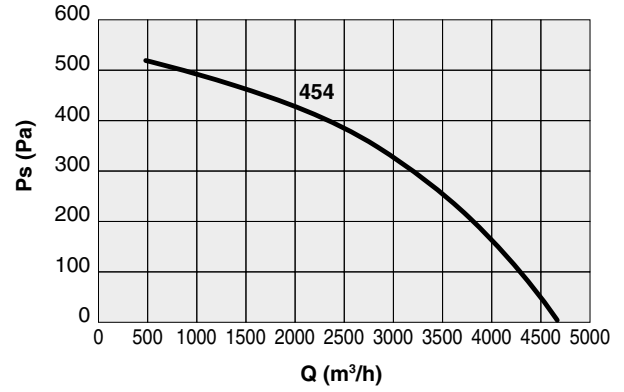
S-CUBE KAT casonetti | box fans

## S-CUBE KAT 45

| Code    | Tipo<br>Type | Modello<br>Model | U | P | Pm<br>(kW) | In<br>(A) | IP/CL | IE3 | Mot.<br>(Gr) |
|---------|--------------|------------------|---|---|------------|-----------|-------|-----|--------------|
| 1SK4501 | S-CUBE KAT   | 454              | M | 4 | 0,75       | 4,80      | 55/F  | ✓   | 80           |
| 1SK4500 |              | 454              | T | 4 | 0,75       | 2,10      | 55/F  | ✓   | 80           |
| 1SK4502 |              | 456              | T | 6 | 0,37       | 1,40      | 55/F  | -   | 80           |

### LIVELLI SONORI | SOUND LEVELS dB(A)

| Hz  |    | 63   | 125  | 250  | 500  | 1000 | 2000 | 4000 | 8000 | TOT  |
|-----|----|------|------|------|------|------|------|------|------|------|
| 454 | Lw | 46   | 59,5 | 67,4 | 70,3 | 70,2 | 67,2 | 62,8 | 52,4 | 75,4 |
|     | Lp | 25,5 | 39   | 46,9 | 49,7 | 49,7 | 46,7 | 42,2 | 31,8 | 54,9 |
| 456 | Lw | 37,2 | 50,7 | 58,6 | 61,4 | 61,4 | 58,4 | 53,9 | 43,5 | 66,6 |
|     | Lp | 16,6 | 30,1 | 38   | 40,9 | 40,9 | 37,8 | 33,4 | 23   | 46,1 |

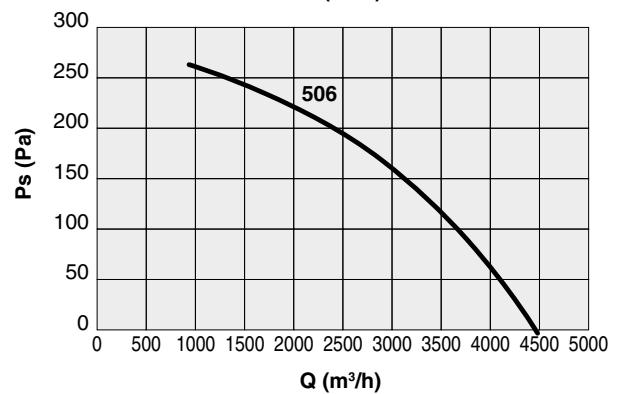
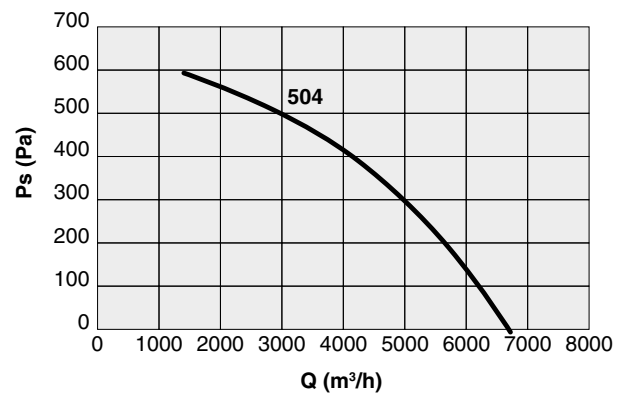


## S-CUBE KAT 50

| Code    | Tipo<br>Type | Modello<br>Model | U | P | Pm<br>(kW) | In<br>(A) | IP/CL | IE3 | Mot.<br>(Gr) |
|---------|--------------|------------------|---|---|------------|-----------|-------|-----|--------------|
| 1SK5000 | S-CUBE KAT   | 504              | T | 4 | 1,10       | 2,50      | 55/F  | ✓   | 90S          |
| 1SK5002 |              | 506              | T | 6 | 0,37       | 1,40      | 55/F  | -   | 80           |

### LIVELLI SONORI | SOUND LEVELS dB(A)

| Hz  |    | 63   | 125  | 250  | 500  | 1000 | 2000 | 4000 | 8000 | TOT  |
|-----|----|------|------|------|------|------|------|------|------|------|
| 504 | Lw | 45,6 | 61,4 | 68,9 | 72,1 | 73,2 | 70,9 | 65,8 | 55,2 | 78   |
|     | Lp | 25   | 40,9 | 48,3 | 51,6 | 52,6 | 50,3 | 45,2 | 34,7 | 57,4 |
| 506 | Lw | 36,7 | 52,6 | 60   | 63,3 | 64,3 | 62   | 56,9 | 46,4 | 69,1 |
|     | Lp | 16,2 | 32   | 39,5 | 42,7 | 43,8 | 41,5 | 36,4 | 25,9 | 48,6 |

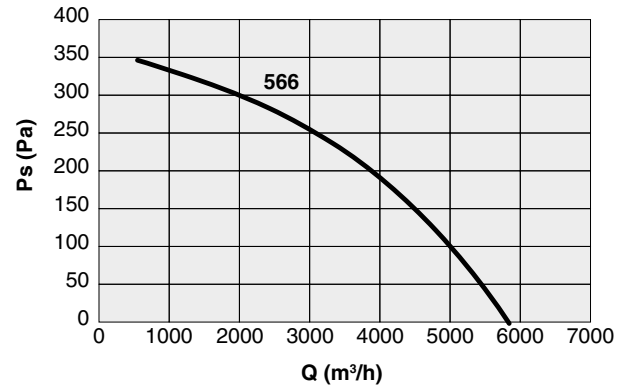


## S-CUBE KAT 56

| Code    | Tipo Type  | Modello Model | U | P | Pm (kW) | In (A) | IP/CL | IE3 | Mot. (Gr) |
|---------|------------|---------------|---|---|---------|--------|-------|-----|-----------|
| 1SK5600 | S-CUBE KAT | 566           | T | 6 | 0,55    | 1,80   | 55/F  | -   | 80        |

### LIVELLI SONORI | SOUND LEVELS dB(A)

| Hz  | 63 | 125  | 250  | 500  | 1000 | 2000 | 4000 | 8000 | TOT  |      |
|-----|----|------|------|------|------|------|------|------|------|------|
| 566 | Lw | 42,2 | 52,2 | 61,3 | 64,3 | 65,4 | 63,2 | 56,1 | 46,4 | 70,1 |
|     | Lp | 21,6 | 31,7 | 40,7 | 43,7 | 44,8 | 42,6 | 35,5 | 25,8 | 49,5 |

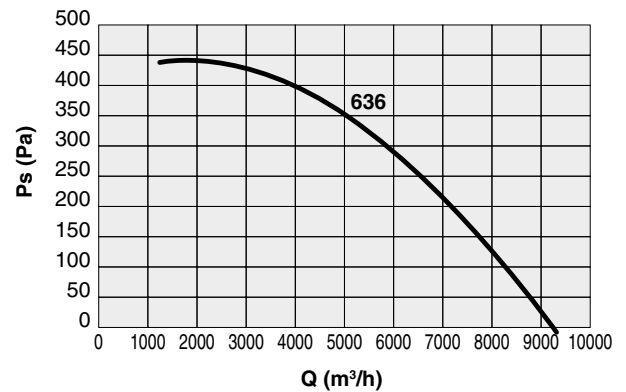


## S-CUBE KAT 63

| Code    | Tipo Type  | Modello Model | U | P | Pm (kW) | In (A) | IP/CL | IE3 | Mot. (Gr) |
|---------|------------|---------------|---|---|---------|--------|-------|-----|-----------|
| 1SK6303 | S-CUBE KAT | 636           | T | 6 | 1,10    | 2,80   | 55/F  | ✓   | 90        |

### LIVELLI SONORI | SOUND LEVELS dB(A)

| Hz  | 63 | 125  | 250  | 500  | 1000 | 2000 | 4000 | 8000 | TOT  |      |
|-----|----|------|------|------|------|------|------|------|------|------|
| 636 | Lw | 50,9 | 61,9 | 68,1 | 70,2 | 71,4 | 69,3 | 63,1 | 53,6 | 76,3 |
|     | Lp | 30,3 | 41,3 | 47,5 | 49,6 | 50,8 | 48,8 | 42,6 | 33,1 | 55,8 |

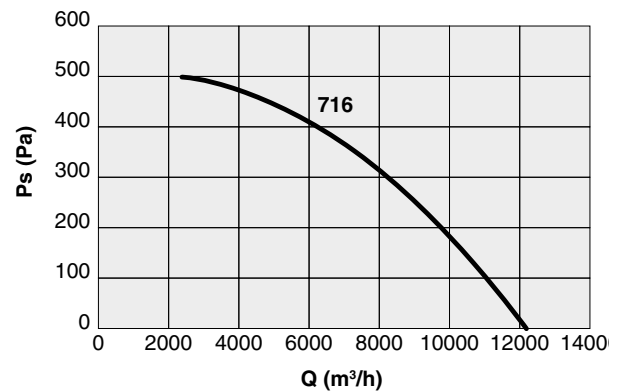


## S-CUBE KAT 71

| Code    | Tipo Type  | Modello Model | U | P | Pm (kW) | In (A) | IP/CL | IE3 | Mot. (Gr) |
|---------|------------|---------------|---|---|---------|--------|-------|-----|-----------|
| 1SK7003 | S-CUBE KAT | 716           | T | 6 | 2,20    | 5,00   | 55/F  | ✓   | 100       |

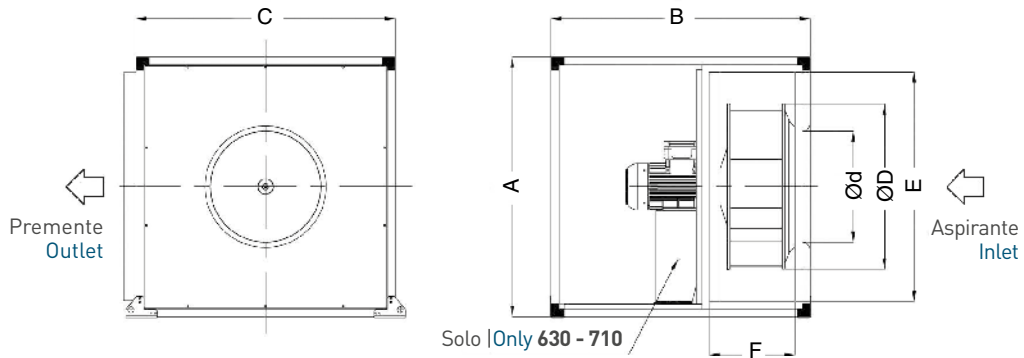
### LIVELLI SONORI | SOUND LEVELS dB(A)

| Hz  | 63 | 125  | 250  | 500  | 1000 | 2000 | 4000 | 8000 | TOT  |      |
|-----|----|------|------|------|------|------|------|------|------|------|
| 716 | Lw | 52,2 | 64,5 | 71,2 | 74,4 | 75,3 | 73,3 | 68,4 | 60,1 | 80,3 |
|     | Lp | 31,6 | 43,9 | 50,7 | 53,9 | 54,8 | 52,7 | 47,9 | 39,6 | 59,8 |



# DIMENSIONI | DIMENSIONS mm

# S-CUBE KAT

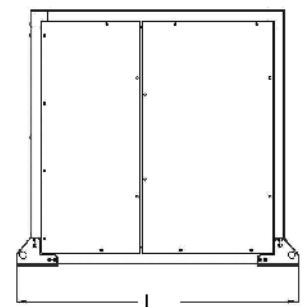
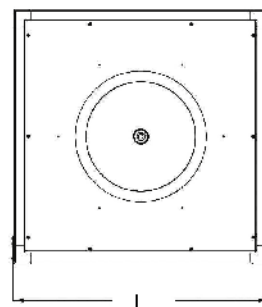
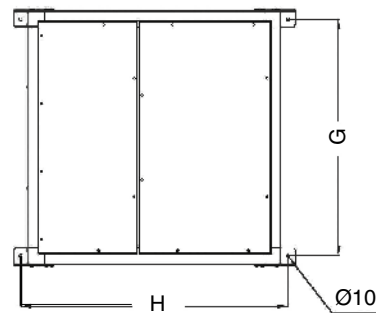


## S-CUBE KAT

| TIPO   TYPE    | A    | B    | C    | ØD  | Ød  | E   | F   | Kg* |
|----------------|------|------|------|-----|-----|-----|-----|-----|
| S-CUBE KAT 250 | 500  | 500  | 500  | 260 | 180 | 420 | 130 | 28  |
| S-CUBE KAT 310 | 500  | 500  | 500  | 315 | 220 | 420 | 130 | 30  |
| S-CUBE KAT 350 | 640  | 640  | 640  | 385 | 270 | 555 | 210 | 46  |
| S-CUBE KAT 400 | 640  | 640  | 640  | 430 | 296 | 555 | 210 | 50  |
| S-CUBE KAT 450 | 750  | 750  | 750  | 470 | 296 | 640 | 245 | 80  |
| S-CUBE KAT 500 | 750  | 750  | 750  | 525 | 327 | 640 | 245 | 88  |
| S-CUBE KAT 560 | 750  | 750  | 750  | 580 | 370 | 640 | 245 | 150 |
| S-CUBE KAT 630 | 1000 | 1000 | 1000 | 650 | 427 | 880 | 330 | 170 |
| S-CUBE KAT 710 | 1000 | 1000 | 1000 | 730 | 477 | 880 | 330 | 175 |

\*Pesi indicativi | Indicative weights

| TIPO   TYPE    | G   | H    | I    | L    |
|----------------|-----|------|------|------|
| S-CUBE KAT 250 | 468 | 530  | 506  | 565  |
| S-CUBE KAT 310 | 468 | 530  | 506  | 565  |
| S-CUBE KAT 350 | 605 | 667  | 643  | 700  |
| S-CUBE KAT 400 | 605 | 667  | 643  | 700  |
| S-CUBE KAT 450 | 698 | 786  | 756  | 835  |
| S-CUBE KAT 500 | 698 | 786  | 756  | 835  |
| S-CUBE KAT 560 | 698 | 786  | 756  | 835  |
| S-CUBE KAT 630 | 948 | 1036 | 1006 | 1080 |
| S-CUBE KAT 710 | 948 | 1036 | 1006 | 1080 |



## INSTALLAZIONE

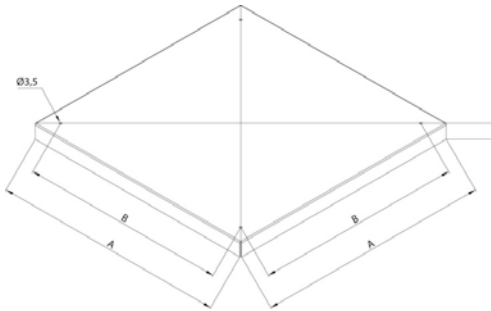
Versatilità di posizionamento nella fase di installazione del prodotto, il cassone può essere infatti montato sia in orizzontale che in verticale indifferentemente. Possono inoltre essere installati all'aperto utilizzando l'apposito tettuccio parapigioggia disponibile come accessorio.

## INSTALLATION

S-CUBE KAT installation is easy thanks to the highly flexible positioning of the product. Indeed, this box fan can be indifferently installed in both vertical and horizontal position and is suitable for outdoor installations (we suggest the use of a water-proof protection cover, available as accessory).



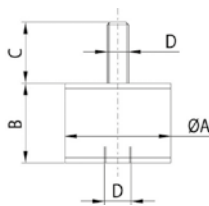
TETTuccio PARAPIOGGIA | WEATHERPROOF COVER



| Code    | Tipo   Type  | A    | B   | H  | Kg   |
|---------|--------------|------|-----|----|------|
| 5TE0080 | 25 / 31      | 550  | 480 | 35 | 4,4  |
| 5TE0081 | 35 / 40      | 700  | 618 | 35 | 6,8  |
| 5TE0082 | 45 / 50 / 56 | 800  | 720 | 50 | 9,3  |
| 5TE0083 | 63 / 71      | 1050 | 970 | 50 | 15,3 |

Dimensioni in mm | Dimensions in mm

SUPPORTI ANTIVIBRANTI | ANTI-VIBRATION SUPPORTS



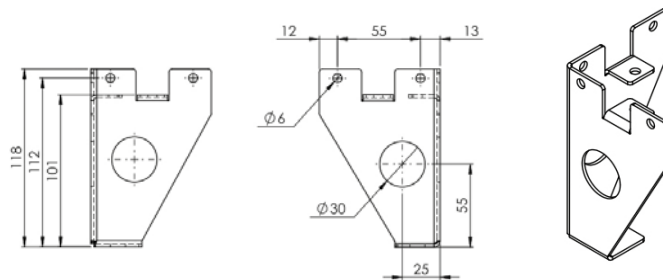
| Code    | Tipo   Type            | ØA | B  | C  | D   | Carico a compressione per 1 supporto (Kg)<br>Compression load for 1 support (Kg) |
|---------|------------------------|----|----|----|-----|--|
| 5SU1057 | 25 / 31 / 35 / 40      | 30 | 20 | 23 | M8  | 21 ÷ 45  |
| 5SU1054 | 45 / 50 / 56 / 63 / 71 | 40 | 30 | 28 | M10 | 46 ÷ 65  |

Dimensioni in mm | Dimensions in mm

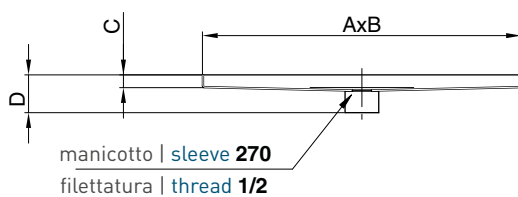
1ST0027 | PIEDE DI SUPPORTO A PAVIMENTO | FLOOR SUPPORT FEET

N°4 piedi da utilizzare in abbinamento al pannello inferiore con scarico condensata e grasso.

N° 4 feet to be used coupled with the condensate and grease drain inferior panel.



PANNELLO INFERIORE CON SCARICO | LOWER PANEL WITH DRAIN

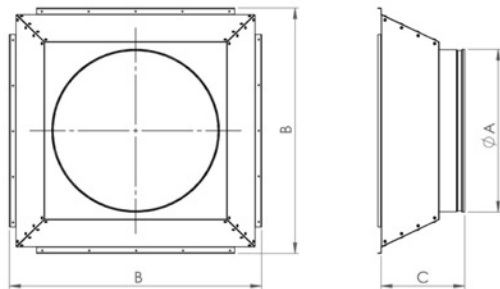


| Code    | Tipo   Type | A   | B   | C  | D  | Kg  |
|---------|-------------|-----|-----|----|----|-----|
| 5PN1431 | 25 / 31     | 170 | 458 | 10 | 30 | 1,2 |
| 5PN1432 | 35 / 40     | 251 | 595 | 10 | 30 | 1,4 |
| 5PN1433 | 45 / 50     | 294 | 687 | 18 | 38 | 2   |

Dimensioni in mm | Dimensions in mm



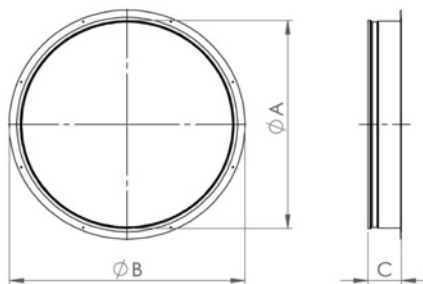
## RACCORDO QUADRO/TONDO | SQUARE TO ROUND OUTLET ADAPTOR



| Code    | Tipo   Type | ØA  | B    | C   | kg   |
|---------|-------------|-----|------|-----|------|
| 5RA2010 | 25          | 250 | 505  | 150 | 2.65 |
| 5RA2011 | 31          | 315 | 505  | 155 | 2.86 |
| 5RA2012 | 35          | 350 | 640  | 155 | 3.83 |
| 5RA2013 | 40          | 400 | 640  | 155 | 3.77 |
| 5RA2014 | 45          | 450 | 754  | 250 | 6.32 |
| 5RA2015 | 50          | 500 | 754  | 250 | 6.41 |
| 5RA2018 | 56          | 560 | 754  | 250 | 6.52 |
| 5RA2019 | 63          | 630 | 1007 | 250 | 7.02 |
| 5RA2020 | 71          | 710 | 1007 | 250 | 7.42 |

Dimensioni in mm | Dimensions in mm

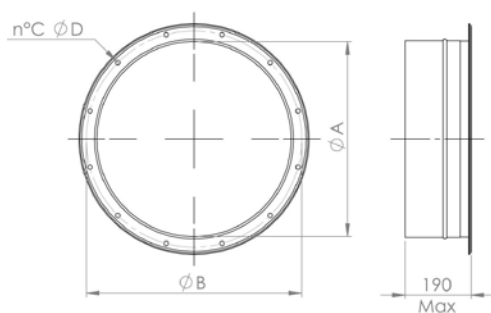
## RACCORDO ASPIRANTE TONDO | ROUND SPIGOT INLET CONE



| Code    | Tipo   Type | ØA  | ØB  | C    | kg   |
|---------|-------------|-----|-----|------|------|
| 1TR0014 | 25          | 250 | 300 | 56   | 0.62 |
| 1TR0015 | 31          | 315 | 350 | 56   | 0.69 |
| 1TR0016 | 35          | 355 | 400 | 56   | 0.85 |
| 1TR0017 | 40          | 400 | 450 | 56   | 0.96 |
| 1TR0018 | 45          | 450 | 500 | 56   | 1.08 |
| 1TR0019 | 50          | 500 | 550 | 78.5 | 1.5  |
| 1TR0020 | 56          | 560 | 610 | 78.5 | 1.7  |
| 1TR0021 | 63          | 630 | 680 | 78.5 | 1.88 |
| 1TR0022 | 71          | 710 | 760 | 78.5 | 2.05 |

Dimensioni in mm | Dimensions in mm

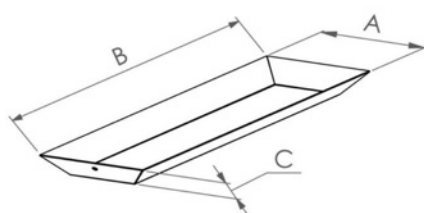
## GIUNTO ANTIVIBRANTE | FLEXIBLE CONNECTOR



| Code    | Tipo   Type | ØA  | ØB  | C  | ØD | kg  |
|---------|-------------|-----|-----|----|----|-----|
| 1SU5100 | 35          | 350 | 395 | 8  | 10 | 1.5 |
| 1SU5101 | 40          | 400 | 450 | 8  | 12 | 1.7 |
| 1SU5102 | 45          | 450 | 500 | 8  | 12 | 2   |
| 1SU5103 | 50          | 500 | 560 | 12 | 12 | 2.2 |
| 1SU5104 | 56          | 560 | 620 | 12 | 12 | 2.5 |
| 1SU5105 | 63          | 630 | 690 | 12 | 12 | 2.9 |
| 1SU5106 | 71          | 710 | 770 | 16 | 12 | 3.3 |

Dimensioni in mm | Dimensions in mm

## VASCHETTA RACCOGLI GRASSO | GREASE COLLECTION TRAY



| Code    | Tipo   Type | A   | B   | C  | Kg  |
|---------|-------------|-----|-----|----|-----|
| 1KT0400 | 25 / 31     | 112 | 427 | 22 | 0,8 |
| 1KT0401 | 35 / 40     | 177 | 567 | 29 | 1,1 |
| 1KT0402 | 45 / 50     | 200 | 650 | 36 | 1,3 |

Dimensioni in mm | Dimensions in mm