



PR-AC ATEX

Aspiratori centrifughi in materiale plastico Centrifugal fans in plastic material



Direttiva
ATEX 2014/34/UE

A RICHIESTA UPON REQUEST

- ATEX II3D
- Staffa porta-motore in acciaio inossidabile AISI 304
- ATEX II3D
- Version with motor support in stainless steel AISI 304.

VERSIONI | VERSIONS



PR-AC

Versione per sola aria corrosiva in atmosfera non esplosiva con temperatura dell'aria fino a 70°C.
Version for corrosive air in non-explosive atmosphere with air temperature up to 70°C.

DESCRIZIONE

La serie PR-AC ATEX è particolarmente adatta a convogliare fumi e vapori corrosivi (non abrasivi) o ad alto tasso d'umidità, con temperatura da -20°C a +40°C. L'utilizzo di specifici materiali e componenti rendono la serie PR-AC compatibile a installazioni rispondenti alle Direttiva 2014/34/UE. La sua installazione è particolarmente indicata negli impianti certificati ATEX categoria 3, zona 2-22 (3G). La girante a pale rovesce conferisce a questa serie buone caratteristiche di silenziosità ed efficienza aeraulica. PR-AC ATEX è un ventilatore centrifugo realizzato con tecnopolimeri aventi caratteristiche tecniche e meccaniche che permettono una maggiore longevità rispetto a vari tipi di metalli. Terminato il ciclo vitale, i materiali utilizzati sono totalmente riciclabili.

COSTRUZIONE

- Cassa a spirale realizzata in polietilene antistatico e autoestingente.
- Girante a semplice aspirazione, realizzata in polipropilene antistatica, con mozzo in alluminio protetto dal fluido convogliato.
- Staffa porta-motore realizzata in lamiera d'acciaio verniciata a polveri epossidiche.

MOTORE

Motore asincrono trifase ATEX per atmosfere esplosive Categoria G gruppo II classe termica T4 protezione Exd costruito secondo le norme internazionali IEC60034, IEC60072, IEC60079, e/o 61241, EMC 2014/30/UE, LVD 2014/35/UE, IP55, classe F, Forma B3 o B5, marchiati CE e certificato ATEX da ente notificato. Idoneo a servizio S1, funzionamento continuo a carico costante.

ACCESSORI

- Rete di protezione per bocca aspirante e premente realizzata a norma UNI 10615
- Giunto antivibrante in PVC per bocca aspirante e premente
- Serranda a gravità
- Serranda di taratura manuale.

DESCRIPTION

The PR-AC ATEX series is designed for conveying smoke and corrosive (not abrasive) or highly humid vapours with temperature from -20°C to +40°C. The use of specific materials and components make PR-AC ATEX suitable for installation in plant certified according to the ATEX Directive 2014/34/EU. Their installation is particularly indicated in ATEX category 3, zone 2-22 (3G). The backward curved impeller provide good characteristics of low noise and high efficiency. The PR-AC ATEX fan, when its lifetime is finished, is easy to dispose, being manufactured with recyclable materials. Besides, such materials guarantee a longer life cycle in comparison to different types of metals.

CONSTRUCTION

- Volute in polyethylene.
- Single inlet impeller, in Polypropylene, with backward curved blades and aluminium hub (protected from the fluid).
- Motor support in epoxy painted steel sheet.

MOTOR

Asynchronous three-phase or single-phase ATEX motors for explosive atmospheres category G group II thermal class T4 protection Exd according to international standards IEC 60034, IEC 60072, EMC 2014/30/UE, LVD 2014/35/UE, marked, IP 55, class F, B3 or B5 shape. Suitable to a S1 service (continuous working to constant load).

ACCESSORIES

- Inlet protection guard according to UNI 10615
- Anti-vibration joint in PVC for inlet and outlet sides
- Gravity shutter
- Manual setting shutter.

PRESTAZIONI | PERFORMANCE

PR-AC ATEX

Le prestazioni aerauliche sono rilevate in conformità alla norma EN ISO 5801/AMCA 210 con densità dell'aria standard avente peso specifico 1,2 Kg/m³. Alimentazione 230V/1Ph/50Hz o 400V/3Ph/50Hz. Air performances measured according to EN ISO 5801 / AMCA 210 standard with air density with 1,2 Kg/m³ specific weight. Power supply 230V/1Ph/50Hz or 400V/3Ph/50Hz.

Lp Livello di pressione sonora rilevato in condizioni di campo libero, propagazione sferica, categoria di misura C a norma EN ISO 13349, nel punto di massimo rendimento, alla distanza di 1,5 metri dal lato aspirazione e si presenta solo per fini comparativi. Sound pressure level measured in free field conditions, propagation spherical, measurement category C in accordance with EN ISO 13349, at the point of maximum efficiency at a distance of 1,5 meters, inlet side (for comparative purposes only).

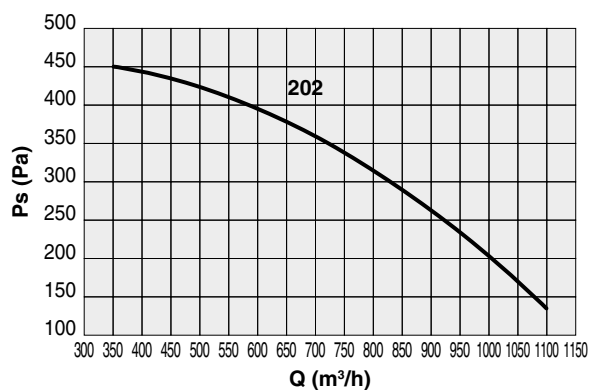
Lw Livello di potenza sonora ottenuto secondo norma ISO 3746. Tolleranza +/- 3 dB(A). Sound power level obtained in accordance with EN ISO 3746. Tolerance +/- 3 dB(A).

PR-AC ATEX 200

| Code | Tipo Type | Modello Model | U | P | Pm (kW) | In (A) | IP/CL | IE3 | Mot. (Gr) |
|---------|------------|---------------|---|---|---------|--------|-------|-----|-----------|
| 7PA2106 | PR-AC ATEX | 202 | T | 2 | 0,18 | 0,70 | 55/F | - | 63 |

LIVELLI SONORI | SOUND LEVELS dB(A)

| Hz | | 63 | 125 | 250 | 500 | 1000 | 2000 | 4000 | 8000 | TOT |
|-----|----|------|------|------|------|------|------|------|------|-----|
| 202 | Lw | 77,3 | 79,3 | 77,3 | 78,3 | 74,3 | 69,3 | 61,3 | 53,3 | 85 |
| | Lp | 63 | 65 | 63 | 64 | 60 | 55 | 47 | 39 | 70 |

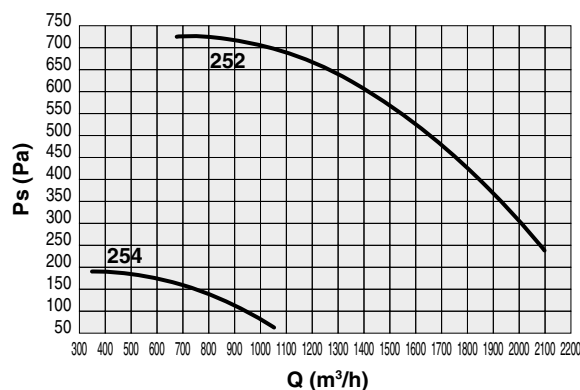


PR-AC ATEX 250

| Code | Tipo Type | Modello Model | U | P | Pm (kW) | In (A) | IP/CL | IE3 | Mot. (Gr) |
|---------|------------|---------------|---|---|---------|--------|-------|-----|-----------|
| 7PA2632 | PR-AC ATEX | 252 | M | 2 | 0,37 | 1,20 | 55/F | - | 71 |
| 7PA2633 | | 254 | T | 4 | 0,12 | 0,74 | 55/F | - | 63 |

LIVELLI SONORI | SOUND LEVELS dB(A)

| Hz | | 63 | 125 | 250 | 500 | 1000 | 2000 | 4000 | 8000 | TOT |
|-----|----|------|------|------|------|------|------|------|------|-----|
| 252 | Lw | 84,2 | 86,2 | 84,2 | 85,2 | 81,2 | 76,2 | 68,2 | 60,2 | 92 |
| | Lp | 70 | 72 | 70 | 71 | 67 | 62 | 54 | 46 | 77 |
| 254 | Lw | 69,3 | 71,3 | 72,3 | 67,3 | 66,3 | 61,3 | 53,3 | 45,3 | 77 |
| | Lp | 55 | 57 | 58 | 53 | 52 | 47 | 39 | 31 | 62 |

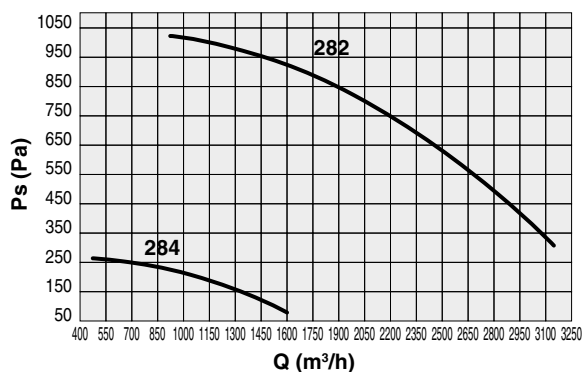


PR-AC ATEX 280

| Code | Tipo Type | Modello Model | U | P | Pm (kW) | In (A) | IP/CL | IE3 | Mot. (Gr) |
|---------|------------|---------------|---|---|---------|--------|-------|-----|-----------|
| 7PA2894 | PR-AC ATEX | 282 | T | 2 | 0,75 | 2,00 | 55/F | ✓ | 80 |
| 7PA2895 | | 284 | T | 4 | 0,18 | 0,84 | 55/F | - | 63 |

LIVELLI SONORI | SOUND LEVELS dB(A)

| Hz | | 63 | 125 | 250 | 500 | 1000 | 2000 | 4000 | 8000 | TOT |
|-----|----|----|-----|-----|-----|------|------|------|------|-----|
| 282 | Lw | 88 | 90 | 88 | 89 | 85 | 80 | 72 | 64 | 95 |
| | Lp | 73 | 75 | 73 | 74 | 70 | 65 | 57 | 49 | 81 |
| 284 | Lw | 73 | 75 | 76 | 71 | 70 | 65 | 57 | 49 | 81 |
| | Lp | 58 | 60 | 61 | 56 | 55 | 50 | 42 | 34 | 66 |

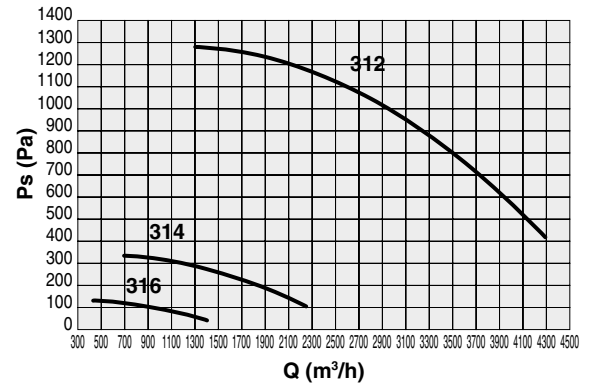


PR-AC ATEX 310

| Code | Tipo Type | Modello Model | U | P | Pm (kW) | In (A) | IP/CL | IE3 | Mot. (Gr) |
|---------|------------|---------------|---|---|---------|--------|-------|-----|-----------|
| 7PA3230 | | 312 | T | 2 | 1,50 | 3,60 | 55/F | ✓ | 90S |
| 7PA3231 | PR-AC ATEX | 314 | T | 4 | 0,25 | 1,20 | 55/F | - | 71 |
| 7PA3232 | | 316 | T | 6 | 0,18 | 1,00 | 55/F | - | 71 |

LIVELLI SONORI | SOUND LEVELS dB(A)

| Hz | Hz | 63 | 125 | 250 | 500 | 1000 | 2000 | 4000 | 8000 | TOT |
|-----|----|------|------|------|------|------|------|------|------|-----|
| 312 | Lw | 90,7 | 92,7 | 90,7 | 91,7 | 87,7 | 82,7 | 74,7 | 66,7 | 98 |
| | Lp | 76 | 78 | 76 | 77 | 73 | 68 | 60 | 52 | 84 |
| 314 | Lw | 75,7 | 77,7 | 78,7 | 73,7 | 72,7 | 67,7 | 59,7 | 51,7 | 83 |
| | Lp | 61 | 63 | 64 | 59 | 58 | 53 | 45 | 37 | 69 |
| 316 | Lw | 65,2 | 70,2 | 65,2 | 63,2 | 62,2 | 57,2 | 49,2 | 41,2 | 73 |
| | Lp | 51 | 56 | 51 | 49 | 48 | 43 | 35 | 27 | 59 |

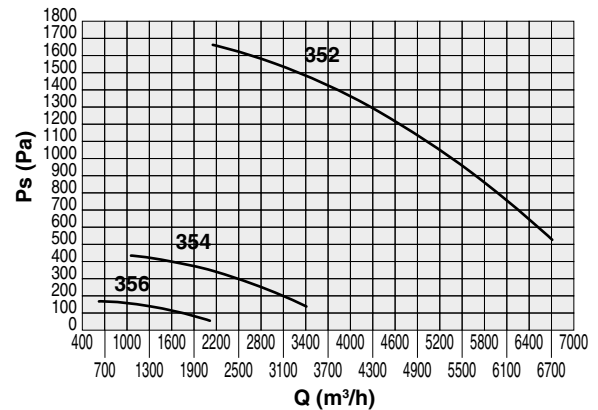


PR-AC ATEX 350

| Code | Tipo Type | Modello Model | U | P | Pm (kW) | In (A) | IP/CL | IE3 | Mot. (Gr) |
|---------|------------|---------------|---|---|---------|--------|-------|-----|-----------|
| 7PA3629 | | 352 | T | 2 | 2,20 | 5,00 | 55/F | ✓ | 90L |
| 7PA3630 | PR-AC ATEX | 354 | T | 4 | 0,37 | 1,50 | 55/F | - | 71 |
| 7PA3631 | | 356 | T | 6 | 0,18 | 1,00 | 55/F | - | 71 |

LIVELLI SONORI | SOUND LEVELS dB(A)

| Hz | Hz | 63 | 125 | 250 | 500 | 1000 | 2000 | 4000 | 8000 | TOT |
|-----|----|------|------|------|------|------|------|------|------|-----|
| 352 | Lw | 92,2 | 94,2 | 92,2 | 93,2 | 89,2 | 84,2 | 76,2 | 68,2 | 100 |
| | Lp | 78 | 80 | 78 | 79 | 75 | 70 | 62 | 54 | 85 |
| 354 | Lw | 77,2 | 79,2 | 80,2 | 75,2 | 74,2 | 69,2 | 61,2 | 53,2 | 85 |
| | Lp | 63 | 65 | 66 | 61 | 60 | 55 | 47 | 39 | 70 |
| 356 | Lw | 66,7 | 71,7 | 66,7 | 64,7 | 63,7 | 58,7 | 50,7 | 42,7 | 75 |
| | Lp | 52 | 57 | 52 | 50 | 49 | 44 | 36 | 28 | 60 |

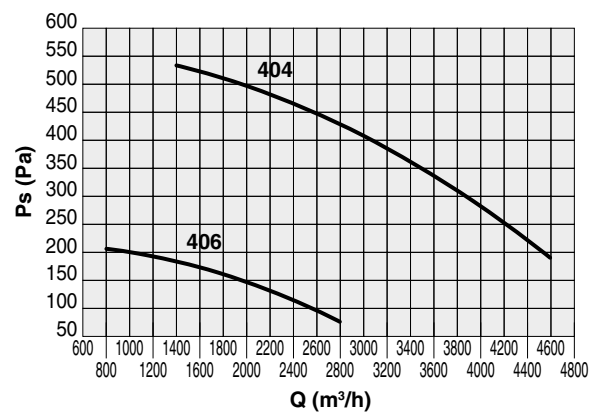


PR-AC ATEX 400

| Code | Tipo Type | Modello Model | U | P | Pm (kW) | In (A) | IP/CL | IE3 | Mot. (Gr) |
|---------|------------|---------------|---|---|---------|--------|-------|-----|-----------|
| 7PA4101 | | 404 | T | 4 | 0,55 | 1,70 | 55/F | - | 80 |
| 7PA4102 | PR-AC ATEX | 406 | T | 6 | 0,25 | 1,40 | 55/F | - | 71 |

LIVELLI SONORI | SOUND LEVELS dB(A)

| Hz | Hz | 63 | 125 | 250 | 500 | 1000 | 2000 | 4000 | 8000 | TOT |
|-----|----|------|------|------|------|------|------|------|------|-----|
| 404 | Lw | 81,5 | 83,5 | 84,5 | 79,5 | 78,5 | 73,5 | 65,5 | 57,5 | 89 |
| | Lp | 67 | 69 | 70 | 65 | 64 | 59 | 51 | 43 | 75 |
| 406 | Lw | 72,1 | 77,1 | 72,1 | 70,1 | 69,1 | 64,1 | 56,1 | 48,1 | 80 |
| | Lp | 58 | 63 | 58 | 56 | 55 | 50 | 42 | 34 | 66 |

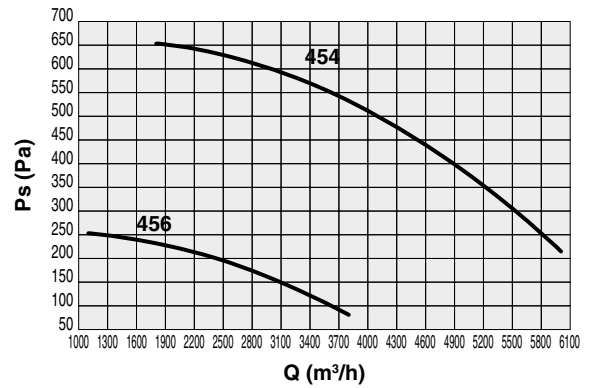


PR-AC ATEX 450

| Code | Tipo Type | Modello Model | U | P | Pm (kW) | In (A) | IP/CL | IE3 | Mot. (Gr) |
|---------|------------|---------------|---|---|---------|--------|-------|-----|-----------|
| 7PA4605 | PR-AC ATEX | 454 | T | 4 | 1,10 | 3,00 | 55/F | ✓ | 90S |
| 7PA4606 | | 456 | T | 6 | 0,37 | 1,60 | 55/F | - | 80 |

LIVELLI SONORI | SOUND LEVELS dB(A)

| Hz | | 63 | 125 | 250 | 500 | 1000 | 2000 | 4000 | 8000 | TOT |
|-----|----|------|------|------|------|------|------|------|------|-----|
| 454 | Lw | 81,6 | 83,6 | 84,6 | 79,6 | 78,6 | 73,6 | 65,6 | 57,6 | 89 |
| | Lp | 67 | 69 | 70 | 65 | 64 | 59 | 51 | 43 | 75 |
| 456 | Lw | 72,3 | 77,3 | 72,3 | 70,3 | 69,3 | 64,3 | 56,3 | 48,3 | 80 |
| | Lp | 58 | 63 | 58 | 56 | 55 | 50 | 42 | 34 | 66 |

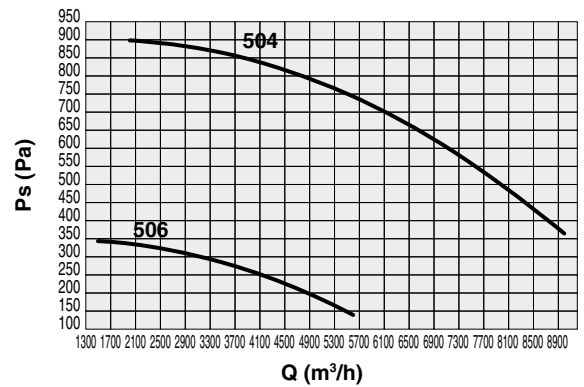


PR-AC ATEX 500

| Code | Tipo Type | Modello Model | U | P | Pm (kW) | In (A) | IP/CL | IE3 | Mot. (Gr) |
|---------|------------|---------------|---|---|---------|--------|-------|-----|-----------|
| 7PA5066 | PR-AC ATEX | 504 | T | 4 | 2,20 | 5,20 | 55/F | ✓ | 100L |
| 7PA5067 | | 506 | T | 6 | 0,55 | 2,00 | 55/F | - | 90S |

LIVELLI SONORI | SOUND LEVELS dB(A)

| Hz | | 63 | 125 | 250 | 500 | 1000 | 2000 | 4000 | 8000 | TOT |
|-----|----|------|------|------|------|------|------|------|------|-----|
| 504 | Lw | 89 | 91 | 92 | 87 | 86 | 81 | 73 | 65 | 97 |
| | Lp | 74 | 76 | 77 | 72 | 71 | 66 | 58 | 50 | 82 |
| 506 | Lw | 79,6 | 81,6 | 82,6 | 77,6 | 76,6 | 71,6 | 63,6 | 55,6 | 87 |
| | Lp | 65 | 67 | 68 | 63 | 62 | 57 | 49 | 41 | 73 |

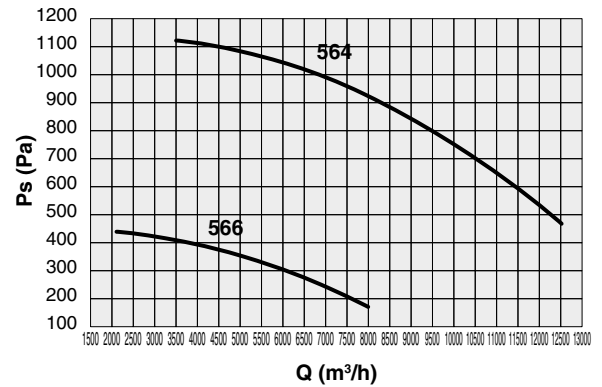


PR-AC ATEX 560

| Code | Tipo Type | Modello Model | U | P | Pm (kW) | In (A) | IP/CL | IE3 | Mot. (Gr) |
|---------|------------|---------------|---|---|---------|--------|-------|-----|-----------|
| 7PA5665 | PR-AC ATEX | 564 | T | 4 | 4,00 | 9,10 | 55/F | ✓ | 112M |
| 7PA5666 | | 566 | T | 6 | 1,50 | 4,40 | 55/F | ✓ | 100L |

LIVELLI SONORI | SOUND LEVELS dB(A)

| Hz | | 63 | 125 | 250 | 500 | 1000 | 2000 | 4000 | 8000 | TOT |
|-----|----|------|------|------|------|------|------|------|------|-----|
| 564 | Lw | 88,5 | 90,5 | 91,5 | 86,5 | 85,5 | 80,5 | 72,5 | 64,5 | 96 |
| | Lp | 74 | 76 | 77 | 72 | 71 | 66 | 58 | 50 | 82 |
| 566 | Lw | 79,1 | 81,1 | 82,1 | 77,1 | 76,1 | 71,1 | 63,1 | 55,1 | 87 |
| | Lp | 65 | 67 | 68 | 63 | 62 | 57 | 49 | 41 | 72 |

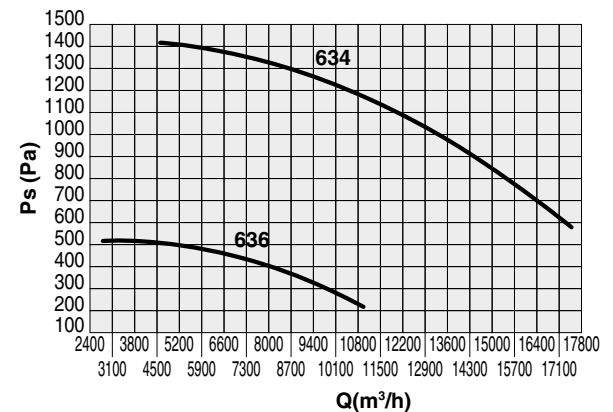


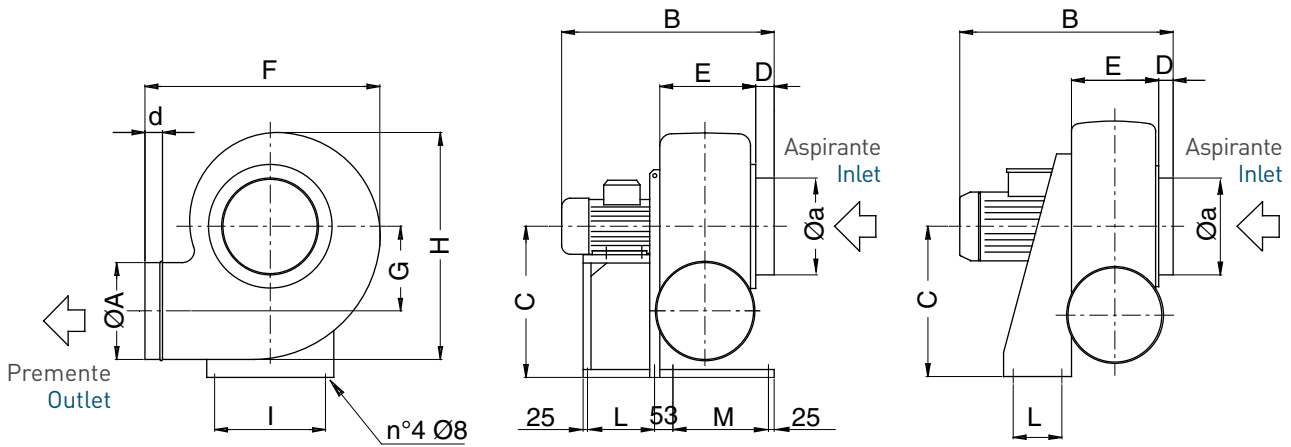
PR-AC ATEX 630

| Code | Tipo Type | Modello Model | U | P | Pm (kW) | In (A) | IP/CL | IE3 | Mot. (Gr) |
|---------|------------|---------------|---|---|---------|--------|-------|-----|-----------|
| 7PA6357 | PR-AC ATEX | 634 | T | 4 | 5,50 | 12,00 | 55/F | ✓ | 112M |
| 7PA6358 | | 636 | T | 6 | 2,20 | 5,40 | 55/F | ✓ | 132S |

LIVELLI SONORI | SOUND LEVELS dB(A)

| Hz | | 63 | 125 | 250 | 500 | 1000 | 2000 | 4000 | 8000 | TOT |
|-----|----|------|------|------|------|------|------|------|------|-----|
| 634 | Lw | 88,3 | 90,3 | 91,3 | 86,3 | 85,3 | 80,3 | 72,3 | 64,3 | 96 |
| | Lp | 74 | 76 | 77 | 72 | 71 | 66 | 58 | 50 | 81 |
| 636 | Lw | 78,9 | 80,9 | 81,9 | 76,9 | 75,9 | 70,9 | 62,9 | 54,9 | 87 |
| | Lp | 64 | 66 | 67 | 62 | 61 | 56 | 48 | 40 | 72 |





PR-AC ATEX 50 - 56 - 63

PR-AC ATEX 20 - 25 - 28 - 31 - 35 - 40 - 45

PR-AC ATEX

| TIPO TYPE | ØA | Øa | B | C | D | d | E | F | G | H | I | L | M | Kg |
|---------------|-----|-----|-----|-----|----|----|-----|------|-----|------|-----|-----|-----|-----|
| PR-AC ATEX 20 | 160 | 160 | 385 | 250 | 35 | 40 | 157 | 373 | 140 | 370 | 200 | 100 | - | 17 |
| PR-AC ATEX 25 | 200 | 200 | 435 | 310 | 35 | 45 | 180 | 452 | 173 | 465 | 255 | 100 | - | 24 |
| PR-AC ATEX 28 | 225 | 225 | 470 | 350 | 40 | 35 | 192 | 515 | 208 | 530 | 280 | 120 | - | 33 |
| PR-AC ATEX 31 | 250 | 250 | 527 | 410 | 40 | 40 | 197 | 560 | 240 | 595 | 320 | 150 | - | 45 |
| PR-AC ATEX 35 | 280 | 280 | 565 | 445 | 40 | 40 | 234 | 600 | 260 | 670 | 355 | 150 | - | 51 |
| PR-AC ATEX 40 | 315 | 315 | 530 | 516 | 40 | 35 | 248 | 675 | 290 | 742 | 330 | 170 | - | 47 |
| PR-AC ATEX 45 | 355 | 355 | 614 | 550 | 40 | 40 | 283 | 750 | 324 | 830 | 368 | 170 | - | 61 |
| PR-AC ATEX 50 | 400 | 400 | 730 | 630 | 50 | 60 | 355 | 840 | 360 | 955 | 290 | 237 | 335 | 77 |
| PR-AC ATEX 56 | 450 | 450 | 760 | 710 | 50 | 60 | 375 | 930 | 410 | 1045 | 289 | 270 | 454 | 120 |
| PR-AC ATEX 63 | 500 | 500 | 887 | 800 | 50 | 60 | 445 | 1110 | 450 | 1200 | 337 | 270 | 505 | 131 |

Pesi indicativi | Indicative weights

ORIENTAMENTI | DISCHARGE ANGLES

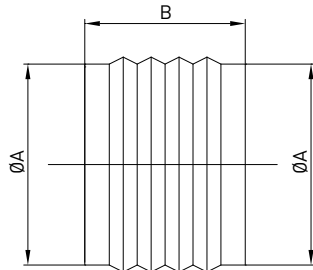
| | | | | | | |
|------------------------------------|----|-----|-----|------|------|------|
| Rotazione Rotation RD | | | | | | |
| Forma Form | 0° | 45° | 90° | 135° | 270° | 315° |
| Rotazione Rotation LG | | | | | | |

N.B.: Orientamento standard LG270° | Standard discharge angles LG 270°



5SU | GIUNTO ANTIVIBRANTE | ANTIVIBRATION JOINT

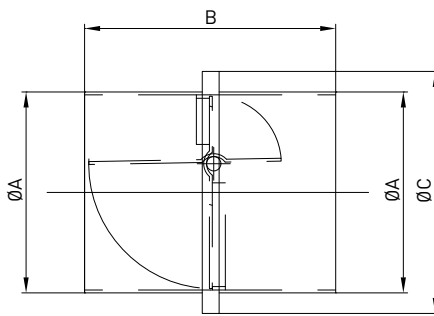
.Per bocca aspirante e premente, in PVC
.Rinlet and outlet, in PVC



| Code | Tipo Type | ØA | B |
|---------|-------------|-----|-----|
| 5SU3020 | 20 | 160 | 160 |
| 5SU3025 | 25 | 200 | 160 |
| 5SU3028 | 28 | 225 | 160 |
| 5SU3030 | 31 | 250 | 160 |
| 5SU3036 | 35 | 280 | 160 |
| 5SU3040 | 40 | 315 | 160 |
| 5SU3045 | 45 | 355 | 160 |
| 5SU3054 | 50 | 400 | 160 |
| 5SU3056 | 56 | 450 | 160 |
| 5SU3063 | 63 | 500 | 160 |

Dimensioni in mm | Dimensions in mm

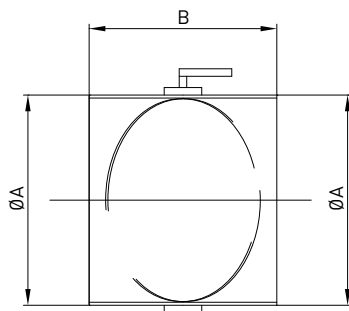
1SE | SERRANDA A GRAVITÀ | GRAVITY SHUTTER



| Code | Tipo Type | ØA | B | ØC |
|---------|-------------|-----|-----|-----|
| 1SE2021 | 20 | 160 | 200 | 240 |
| 1SE2026 | 25 | 200 | 200 | 280 |
| 1SE2028 | 28 | 225 | 200 | 305 |
| 1SE2031 | 31 | 250 | 200 | 330 |
| 1SE2035 | 35 | 280 | 200 | 360 |
| 1SE2040 | 40 | 315 | 210 | 435 |
| 1SE2045 | 45 | 355 | 210 | 475 |
| 1SE2049 | 50 | 400 | 210 | 520 |
| (1) | 56 | 450 | 210 | 570 |
| (1) | 63 | 500 | 210 | 620 |

(1) Codice a richiesta. Dimensioni in mm
(1) Item code upon request. Dimensions in mm

1SE | SERRANDA MANUALE | MANUAL SETTING SHUTTER

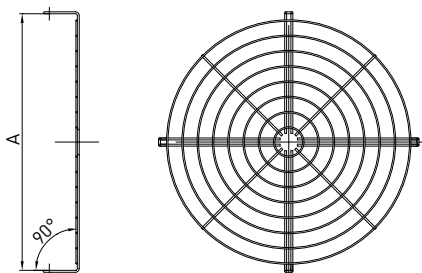


| Code | Tipo Type | ØA | B |
|---------|-------------|-----|-----|
| 1SE2022 | 20 | 160 | 120 |
| 1SE2027 | 25 | 200 | 120 |
| 1SE2030 | 28 | 225 | 120 |
| 1SE2032 | 31 | 250 | 120 |
| 1SE2036 | 35 | 280 | 140 |
| 1SE2041 | 40 | 315 | 140 |
| 1SE2046 | 45 | 355 | 140 |
| 1SE2050 | 50 | 400 | 140 |
| (1) | 56 | 450 | 440 |
| (1) | 63 | 500 | 480 |

Dimensioni in mm | Dimensions in mm

5RE | RETE DI PROTEZIONE | PROTECTION GUARD

.In acciaio inox
.In stainless steel



| Code | Tipo Type | ØA |
|---------|-------------|-----|
| 5RE2002 | 20 | 160 |
| 5RE2552 | 25 | 200 |
| 5RE2802 | 28 | 225 |
| 5RE2029 | 31 | 250 |
| 5RE2502 | 35 | 280 |
| 5RE4004 | 40 | 315 |
| 5RE4504 | 45 | 355 |
| 5RE5008 | 50 | 400 |
| 5RE5600 | 56 | 450 |
| 5RE6300 | 63 | 500 |

Dimensioni in mm | Dimensions in mm